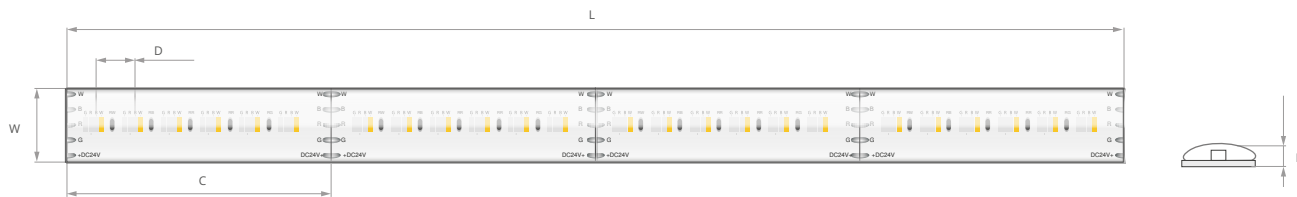


# LED strip KWP-GRGBW-1530-24

Ref. KWP-GRGBW-1530-24



Dimensions: Width [W]: 10 mm | Max run length [L]: 6 m | Cut every [C]: 62.5 mm | LED spacing [D]: 10 mm | Height [H]: 3 mm




- UL Listed
- 3-Step MacAdam's ellipse, single binning (applies only to white color)
- High light transmission of the silicone sleeve (over 93%)

## ADDITIONAL INFORMATION

- the luminous flux applies to unsealed LED strip

## TECHNICAL SPECIFICATIONS

IP protection rating	65
Sealing type	gel cover
LED color	 RGB+W
CRI	90
Only valid for white	yes
Lumen output	231 lm/m 45 lm/m 300 lm/m 60 lm/m
Working temperature	-20°C - 60°C
Input voltage	24 V DC
Power consumption	15.3 W/m
Beam angle	120°
Number of LEDs per 1 m	384
Number of LEDs per cut section	24 pcs

Energy consumption	4 kWh/1000h
Does not contain mercury and lead	yes
Dimmable	yes
No UV IR radiation	yes
Warranty [months]	48
Energy class	G

Color temperature	Efficiency
 3000 K	15 lm/W
 RED	2 lm/W
 GREEN	19 lm/W
 BLUE	3 lm/W